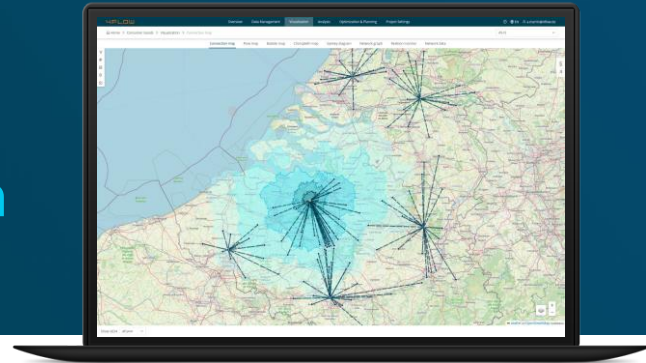




Case Study - Global automotive supplier

Redesigning intercompany tours for yearly savings with 4flow



The challenge

- › Tier 1 multi-industry supplier with a complex intercompany network, including over 60 structured tours and daily transport requirements across multiple plants
- › Optimization was limited to local efforts, with lacking cross-regional visibility and transparency into key metrics
- › Logistics team faced cost pressure and needed a sustainable, software-supported optimization method

Solution approach

- › Applied 4flow network design software to model, assess and restructure 24 tours (~62,000 tons/year)
- › Project led by the customer's team with 4flow support, combining domain, industry and software expertise
- › Built a detailed network model using ERP data and corporate data lake to identify low-utilization transport routes
- › Enabled smart restructuring of tours via hub usage and flexible cut-offs

Outcome and benefits of the initial phase of the project:

- | | | | |
|---|---|--------|---|
| 1 | Lowered costs by consolidating underused tours while ensuring service levels | 500k | €/year savings on transport spend |
| 2 | Standardized and scaled optimization process from West to South region | ~12% | reduction in intercompany transport costs |
| 3 | Achieved transparency on network KPIs, and created a repeatable evaluation and implementation process | 62.000 | Tons/year restructured |

Use cases for automotive suppliers: Driving efficiency and cost reduction with 4flow



End-to-End network refinement

4flow supports supply chain planning from strategic design to tactical transport capacity management.



Customer tender support

Improves proposal quality with visual, data-driven logistics scenarios.



Visualization of complex networks

Enables early detection of bottlenecks and inefficiencies through detailed inventory and network mapping.



Greenfield and brownfield analysis

Ideal for evaluating new production or distribution sites and reconfiguring existing networks.



Transport cost reduction initiatives

Identifies savings potential in international transport networks.



Global network design and simulation

Supports strategic decisions on plant locations, supplier networks, and distribution hubs.

Our supply chain expertise

Real results with 4flow

20%+

Savings in logistics costs

10%+

Reduction in inventory levels

20%+

Increase in process efficiency

Interested or have questions? Contact us!

Get in touch to have your questions answered or to schedule a live demo of our software solutions.

We look forward to hearing from you.



About 4flow

4flow is a leading provider of supply chain consulting, software and fourth-party logistics (4PL) services. With this cross-functional competency, we are able to meet and exceed the highest standards of quality and innovation.

20+

offices in Europe, North America, South America and Asia

1300+

team members globally

400+

customers globally

4flow customers include:

AGCO BASF BD BMW Bosch

Deichmann EDEKA Lear Magna Mars

Roche Siemens Volkswagen Volvo Cars